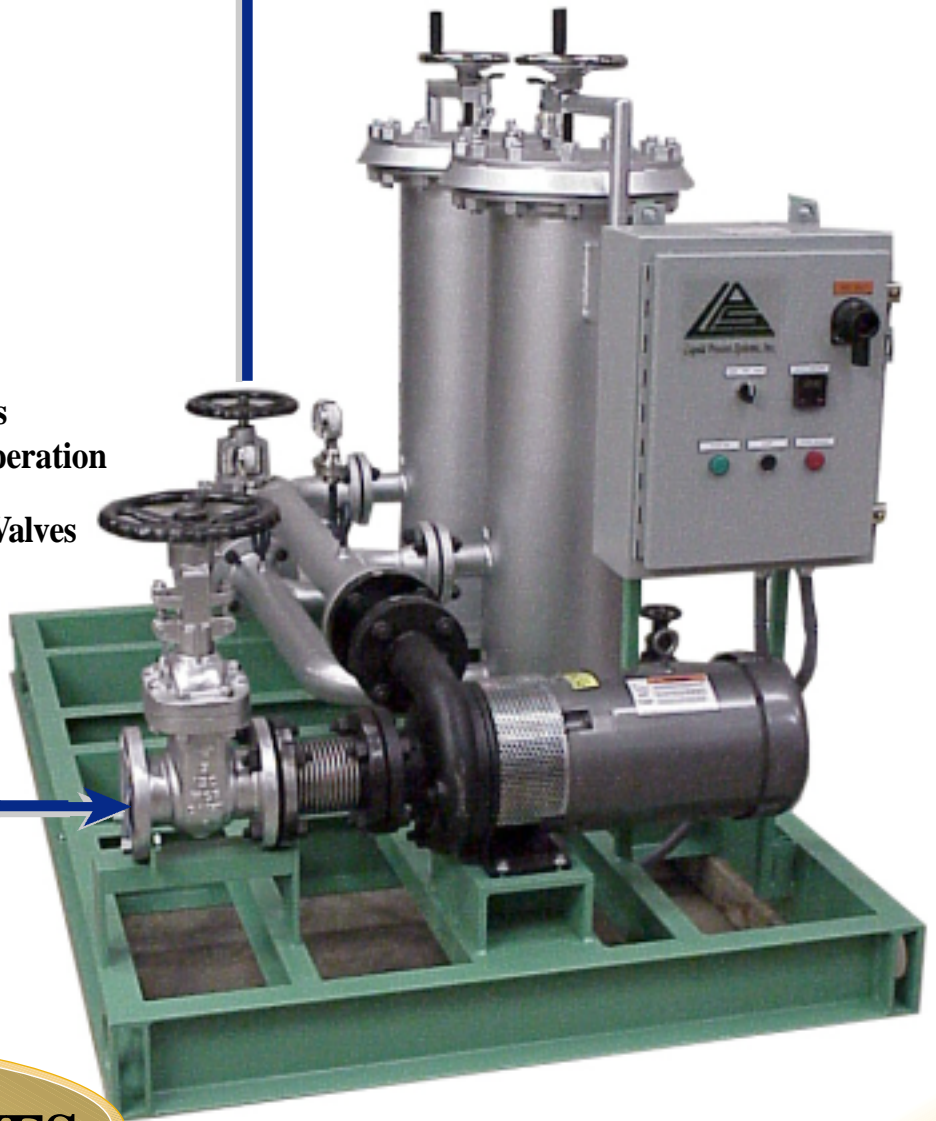


HEAT TRANSFER FLUID & OIL FILTRATION SYSTEM

- Reduce Fouling
- Control Degradation
- Minimize Unscheduled Maintenance
- Increase Heat Transfer Efficiency
- Patented System Cleans Fluids Without Disrupting Process Operation
- Reduce Wear of Seals, Pumps, Valves
- Reduce Overall Heat Transfer Fluid Cost
- Increase Production Rates



SENTINEL SERIES

Flow Rates 15 USGPM or 57 LPM
to 200 USGPM or 758 LPM



**LIQUID
PROCESS
SYSTEMS, INC.**

1025-A Technology Drive
Indian Trail, NC 28079-5514

Toll Free: (888)786-1101

Telephone: (704) 821-1115

Fax: (704) 821-1190

E-Mail: info@lps-filtration.com

Websites: lps-filtration.com
liquidprocesssystems.com

TO 650°F or 345°C
& 150 PSIG or
10.5 BAR

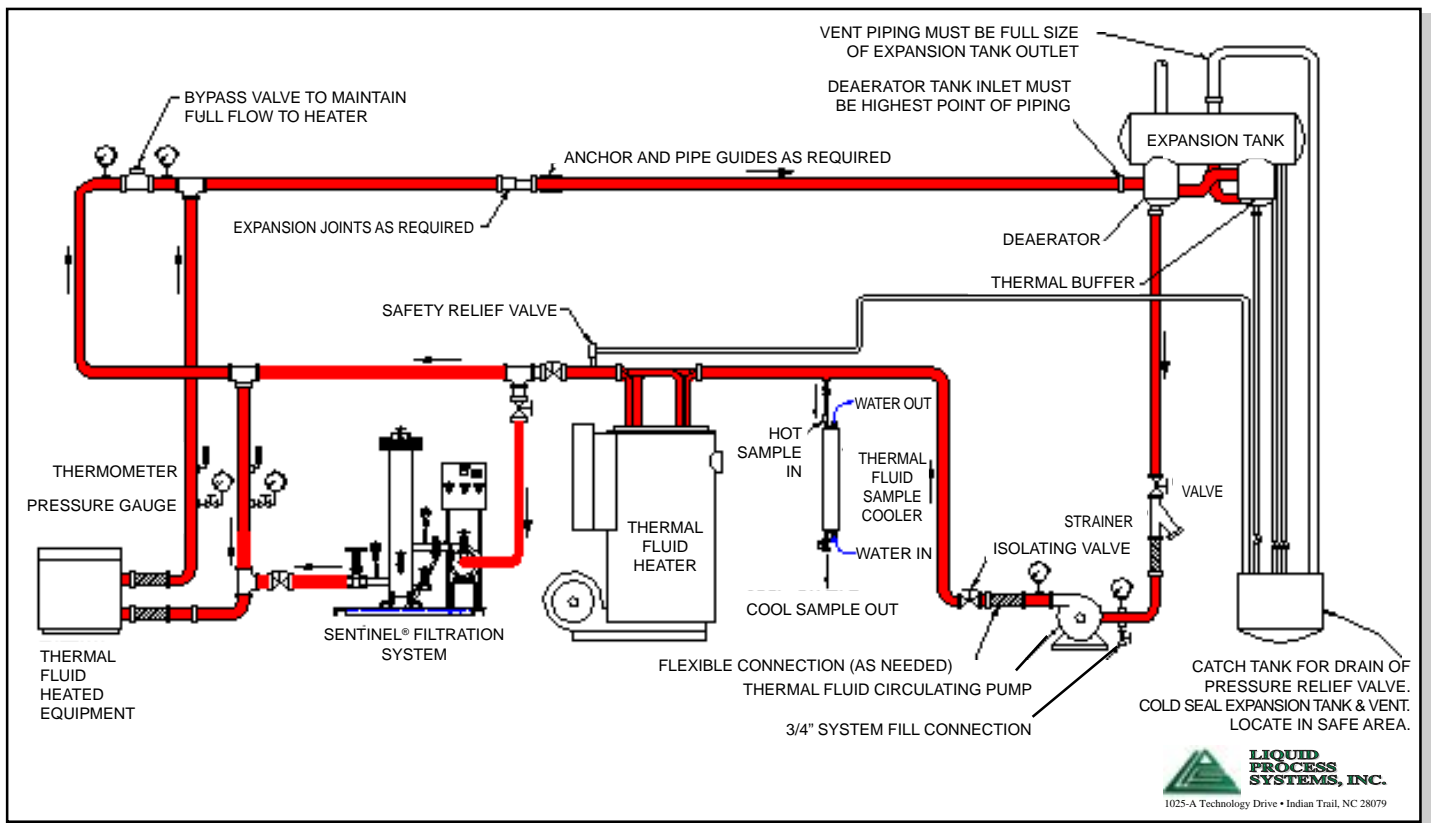
SENTINEL SERIES SPECIFICATIONS

MODEL	FLOW RATE	INLET/OUTLET	ESTIMATED DIMENSIONS		ESTIMATED WEIGHT		NO. of ELEMENTS*
			WxDxH	IN/CM	LBS	KG	
SB10C	15 USGPM or 57 LPM	1" or 25.4 mm NPT or SW	36"x30"x50"	86x71x127	250 LBS or 113 KG		1
SC10C	30 USGPM or 114 LPM	1.5" or 38 mm SW or FLG	40"x30"x54"	97x71x137	380 LBS or 172 KG		2
SD10C	60 USGPM or 227 LPM	2" or 51 mm SW or FLG	47"x37"x55"	102x71x140	480 LBS or 218 KG		4
SE10C	100 USGPM or 379 LPM	2" or 51 mm SW or FLG	60"x48"x58"	104x71x147	605 LBS or 274 KG		7

*Elements range from 100, 50, 25 and 10 microns particle size removal.

The patented Sentinel filter system is a stand alone filtration unit. It includes its own pump, valves, gauges, and controls to provide the highest efficiency in element dirt loading. The modular design makes it versatile in locating the system anywhere within the hot oil system loop.

The control panel includes a filter monitor and automatic shut down of the system when the elements are completely clogged.



This print is the property of LPSi and is furnished as confidential information only. It must not be reproduced in any manner nor submitted to any outside party for any purpose without written permission.