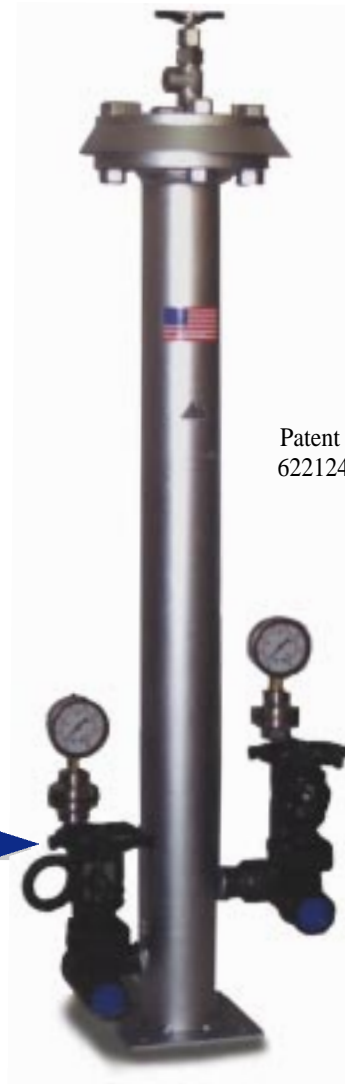


HEAT TRANSFER FLUID & OIL FILTRATION SYSTEM

- Reduce Fouling
- Control Degradation
- Minimize Unscheduled Maintenance
- Increase Heat Transfer Efficiency
- Clean Fluids Without Disrupting System Operation
- Reduce Wear of Seals, Pumps, Valves
- Reduce Overall Heat Transfer Fluid Cost
- Increase Production Rates



Patent #
6221246

VECTOR SERIES

Flow Rates 5 USGPM or 19 LPM
to 100 USGPM or 379 LPM



**LIQUID
PROCESS
SYSTEMS, INC.**

1025-A Technology Drive
Indian Trail, NC 28079-7523

Telephone: (704) 821-1115

Fax: (704) 821-1190

Website: www.lps-filtration.com

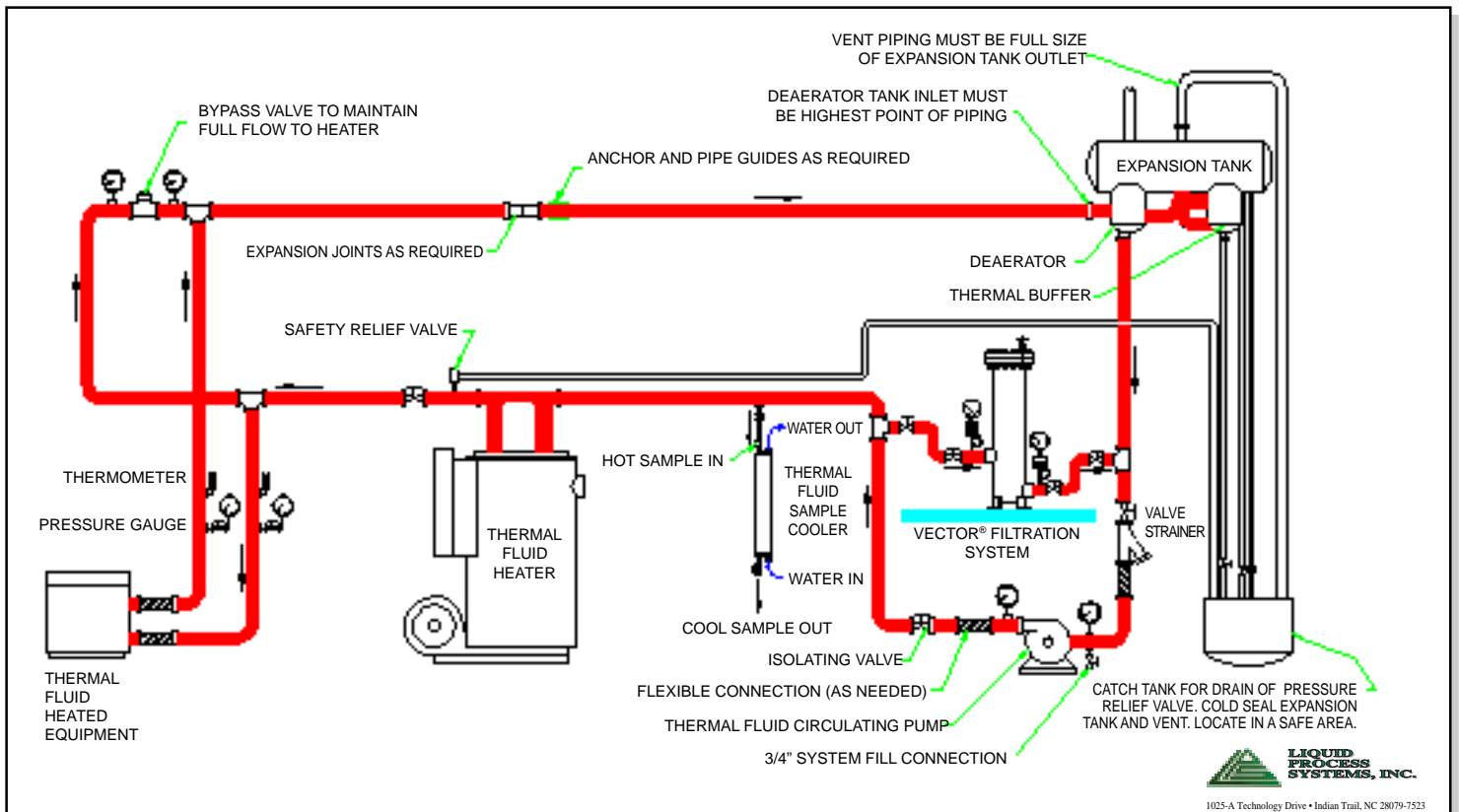
TO 650°F or 345°C
& 150 PSIG or
10.5 BAR

VECTOR SERIES SPECIFICATIONS

MODEL	FLOW RATE	INLET/OUTLET	ESTIMATED DIMENSIONS		ESTIMATED WEIGHT		NO. of ELEMENTS*
			WxDxH	IN/CM	LBS	KG	
VA10C	5 USGPM or 19 LPM	1" or 25.4 MM	13"x10"x24"	33x25x61	70 LBS or 32 KG		1
VB10C	15 USGPM or 57 LPM	1" or 25.4 MM	13"x10"x44"	33x25x112	90 LBS or 41 KG		1
VC10C	30 USGPM or 114 LPM	1.5" or 38 MM	20"x18"x50"	51x46x127	215 LBS or 98 KG		2
VD10C	60 USGPM or 227 LPM	2" or 51 MM	22"x22"x55"	56x56x140	300 LBS or 136 KG		4
VE10C	100 USGPM or 379 LPM	2" or 51 MM	40"x36"x58"	102x92x147	415 LBS or 188 KG		7

*Elements range from 100, 50, 25 and 10 microns particle size removal.

The patented Vector filter system utilizes the available system pressure to direct a portion of the fluid through the filter. The clean oil is discharged to the low pressure side of the hot oil system. The required (ΔP) differential pressure ranges from 2PSID when clean to 25PSID when the elements need replacement.



This print is the property of LPSI and is furnished as confidential information only. It must not be reproduced in any manner nor submitted to any outside party for any purpose without written permission.